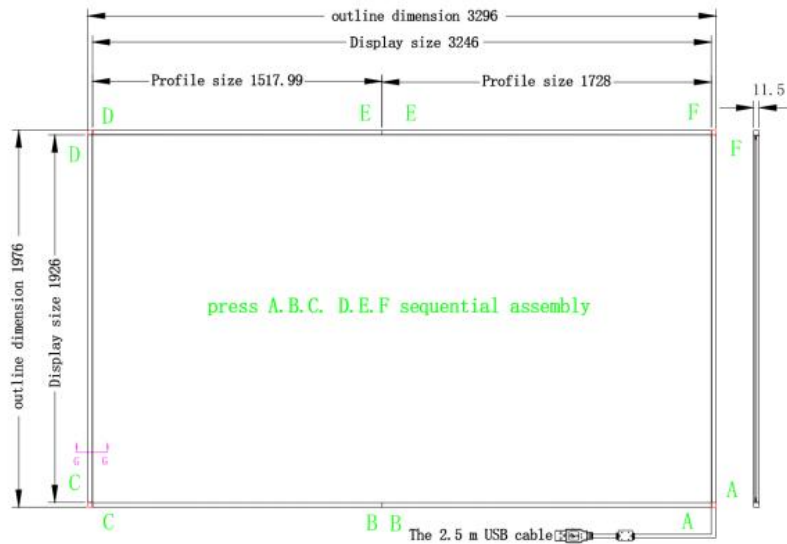


Dear users, thank you for using the infrared touch frame customized by our company. Please spend 2 minutes patiently to read the installation method:

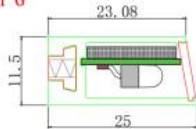
1. Please open the package and arrange it according to the labeling instructions A to A,B to B,C to C,D to D.



Note:

1. Touch frame thickness is 11.5MM;
2. The thickness of double-sided adhesive is 1MM;
3. Pay attention to surrounding safety and surface cleaning and leveling during tempered glass assembly;
4. USB line and power supply with signal amplifier exceeding 5 meters.

Section G

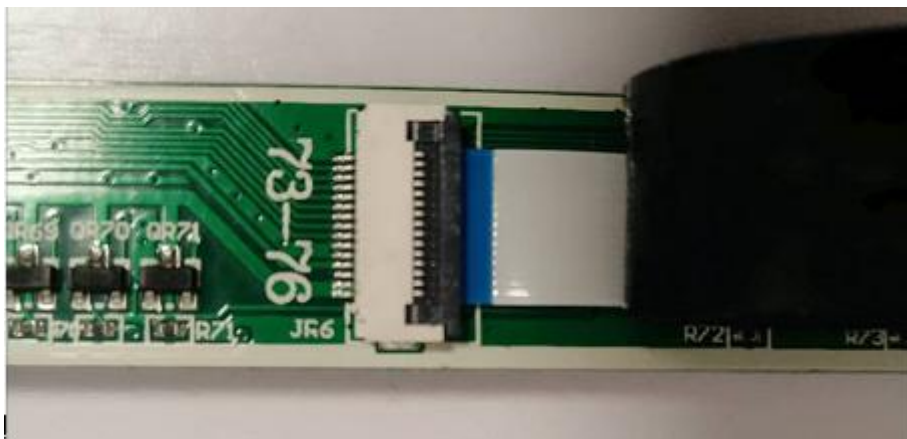


TOLERANCES
(UNLESS OTHERWISE STATED)
DECIMALS ANGLE± 0.5°

>2000mm	±2.00mm
1600<x≤2000mm	±1.20mm
1200<x≤1600mm	±0.80mm
800<x≤1200mm	±0.50mm
400<x≤800mm	±0.30mm
120<x≤400mm	±0.20mm
30<x≤120mm	±0.20mm
≤30mm	±0.15mm

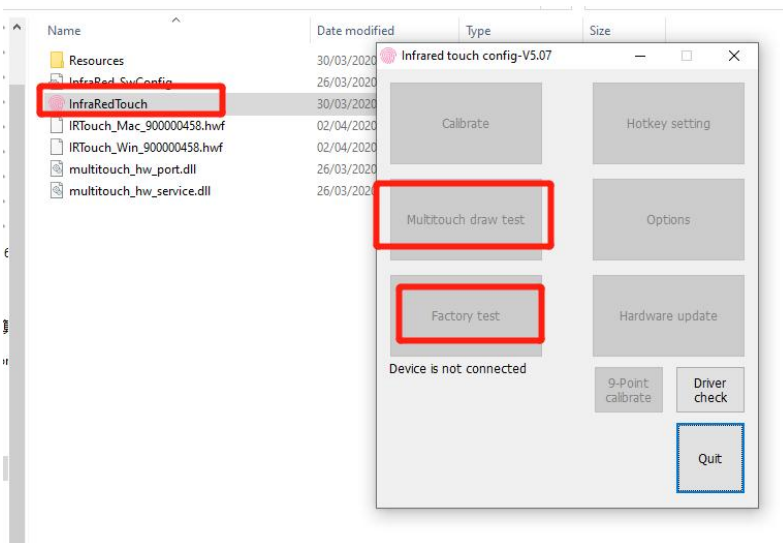
Model: DT-Display (3246X1926)			
customer:		size:	
date:	2021.11.29	Proportion:	1:1
unit:	MM	Edition:	A0
THIRD ANGLE PROJECTION		mapping:	JFB
		client confirmation:	

2. Carefully push out the circuit board in the aluminum alloy frame gently from the other end, lift the black fixing plate on the cable socket slightly (do not use too much force, otherwise the socket will be damaged), plug in the cable, and carefully insert the cable with the blue face up. Be careful not to over-fold the cable when inserting, so as not to break off and affect the working effect of the touch screen or even not work. Then press down the black fixing plate with your fingers. Note: Only the place where the long side and the short side of the USB cable are connected diagonally (upper left corner) need not be plugged in, but the other three corners need to be plugged in.



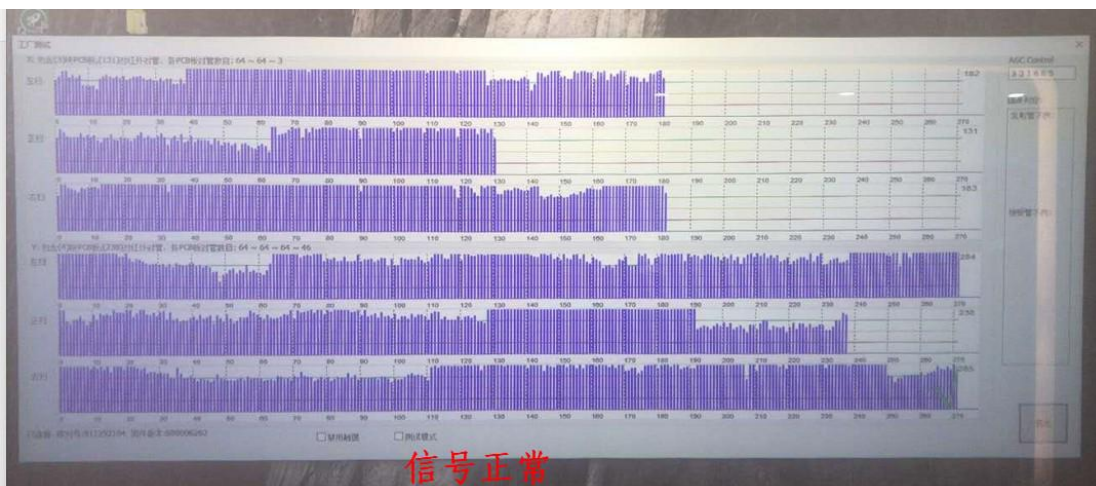
Pictured below:

3. After assembling the touch frame, put it on a flat ground, with no sundries in the middle. Plug the USB cable of the touch frame into the computer, and use V5.07 client version to test whether the signal and drawing line are normal or not.

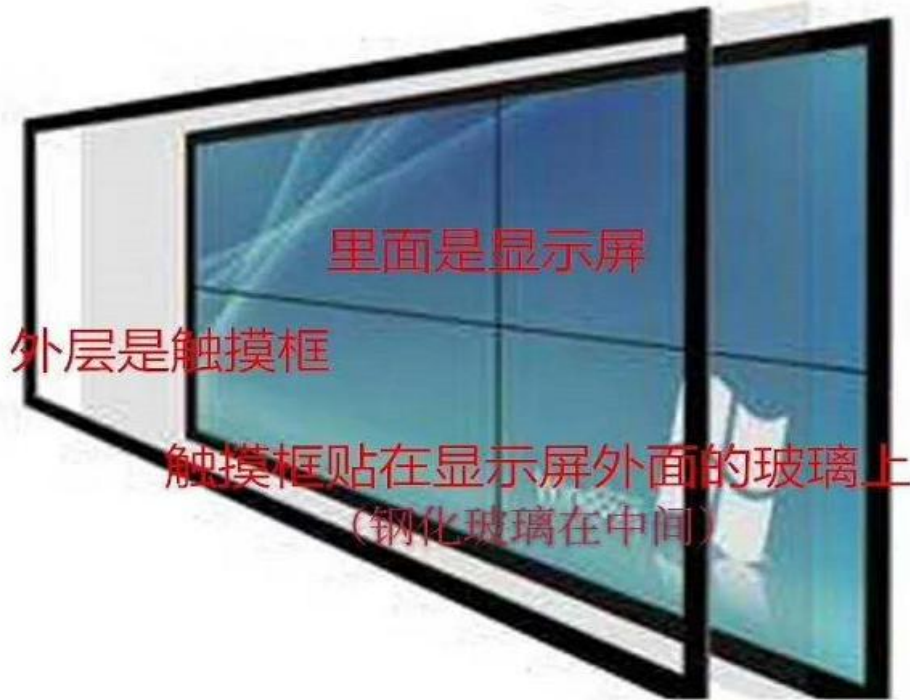


Click "Factory Test". If the signal is all blue, it means there is no problem, then click "Draw Line Test" to draw lines on the full screen to see if all lines can be drawn, and if there is any disconnection.

If the signal has continuous red (it doesn't matter if several red lights are not continuous), take photos and send them to us, which corner or cable is not connected well.



4. After the test signal on the ground is normal, first tear the heads of eight double-sided tapes at the four corners of the back of the touch frame a little bit, and then a few more people slowly lift them and stick them on the screen. Stick only four corners a little first, and then test the signal again (in case the cable of one corner is twisted and pulled loose during lifting, it will be troublesome to remove it if there is any problem after completely sticking it). If there is no problem, tear off the double-sided adhesive and stick it firmly, and then add some glass glue (it must be on the outside of the touch frame), so as to ensure that the touch frame will not fall off after a long time.



5. If the touch frame is too large, for example, 6 meters long * 2.5 meters wide, stick it on the glass one by one. Note: 1. The position should be accurate, not crooked. 2. The ribbon cable must be plugged in and not reversed. If the aluminum at the end of the ribbon cable is creased or damaged, do not use it, and replace it with a spare ribbon cable.
6. After the touch frame is installed, please remember that the ground wire (the one next to USB is the ground wire) should be connected to the metal bracket, or there will be interference.

